

Eye D

Golden-ringed Dragonflies

To the untrained eye, the Golden-ringed Dragonfly might be mistaken for a large tropical wasp. With yellow bands across its black body, it is certainly distinctive in appearance but also habitat. Read on to find out the key features to identify the horse-stinger!

The Golden-ringed Dragonfly, *Cordulegaster boltonii*, is the only member of its family in Britain. In Sussex, the larvae habitat is small heathland streams, so it will always be a scarce and local species.

Where to look:

Heathland and open woodland streams

When to look:

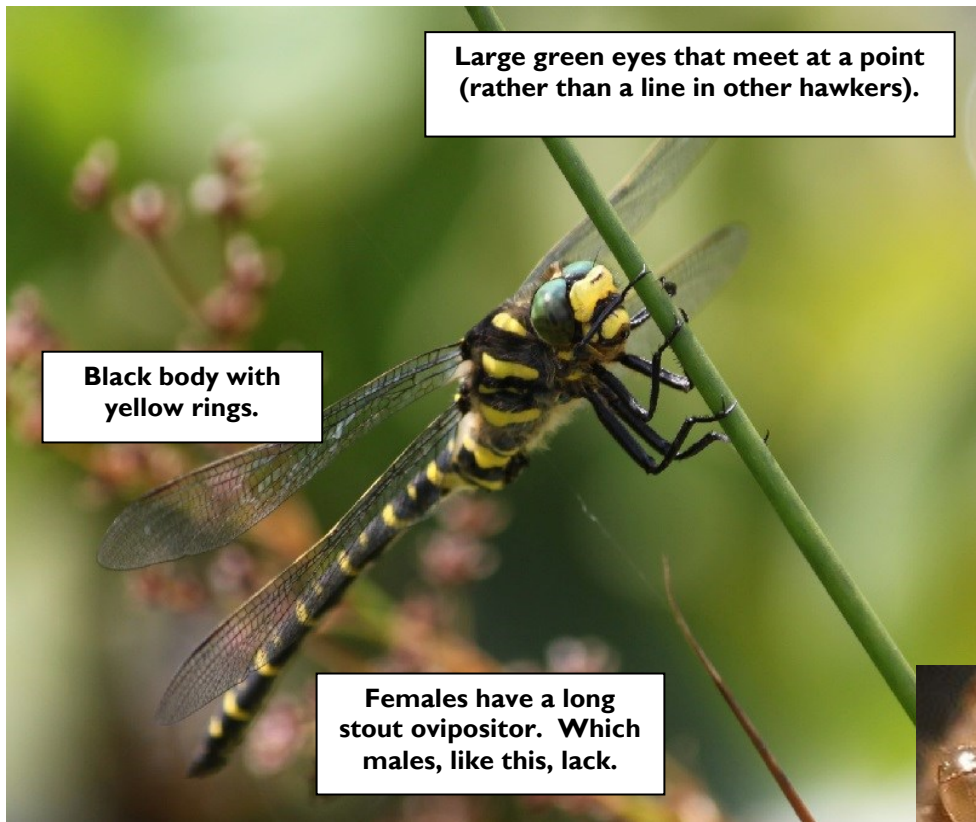
Adults – On the wing from the end of May until September.

Exuviae – Found on bankside vegetation from the end of May to early August.

Larvae – All year round in gravel or silt-bottomed heathland streams.

What to look for:

Below) Male Golden-ringed Dragonfly perched on bankside vegetation.



(Right) A face only a mother could love? Golden-ringed Dragonfly exuviae have large irregular intermeshing 'teeth' unlike other UK species.

